

## Yodal Player User Guide

### 1. Downloading and installing Yodal Player

Yodal Player is available for download at <http://yodal.com/player>

Click on the link to download YodalPlayerSetup.exe

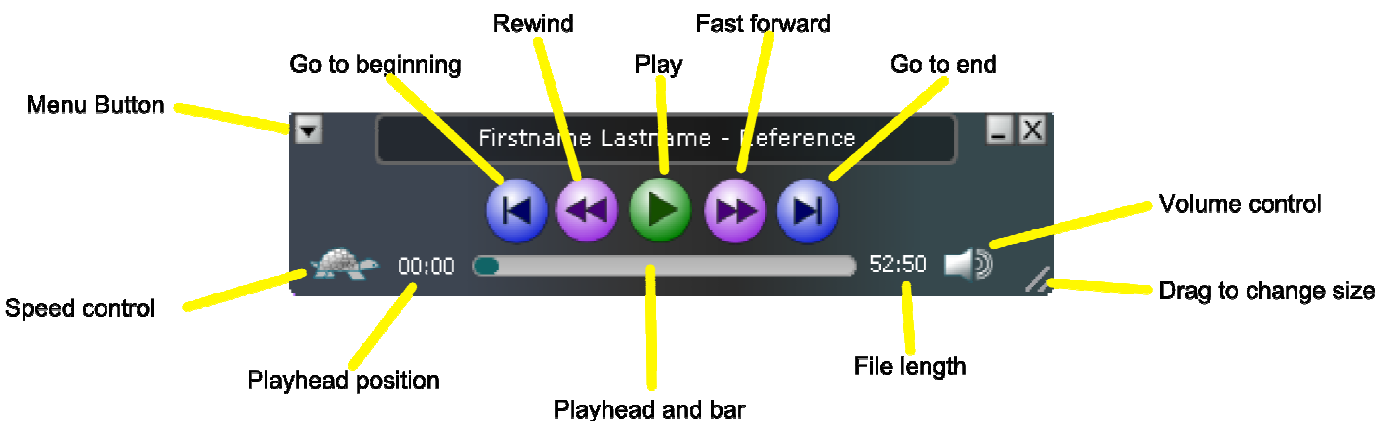
Either save the setup file and then open it, or select 'Run' if that option is provided by your browser. The Yodal Player Setup Wizard will open. Select the appropriate options and then click 'Finish' to complete the installation.

### 2. Opening Yodal recordings

Once installed, Yodal Player will automatically be associated with Yodal recordings so that double-clicking on a Yodal recording will open Yodal Player.

Alternatively, open Yodal Player from the Windows start menu and then select 'Open file...' from the drop-down on the top left of the Yodal Player window. Then browse to the appropriate file.

### 3. Yodal Player window



The window can be expanded and contracted by dragging the lower right corner. The metadata pane then expands to show any additional information provided by the originator. If the window is too small to show the metadata, the information scrolls.

#### 4. Speed and volume controls

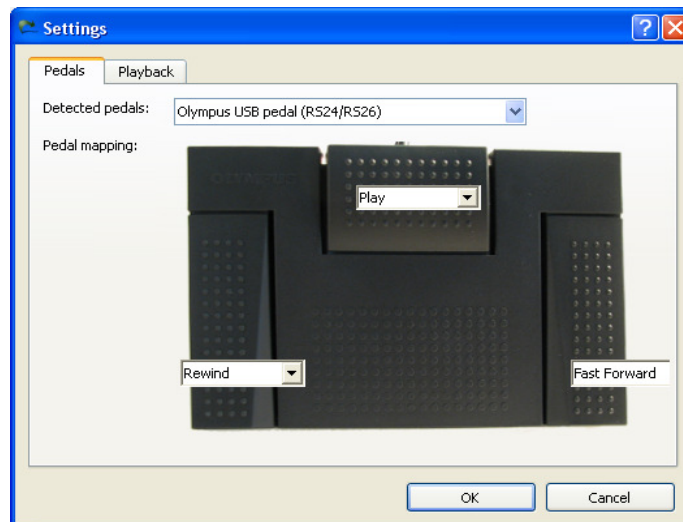
Click on the appropriate symbol and the playhead bar is replaced with an alternative bar and slide control. Move the slider to the desired position to change the playback speed or volume. After a short interval the playhead bar and slide control returns.

#### 5. Settings

Settings can be changed by clicking on the 'Menu' dropdown button at the top left of the Yodal Player window.

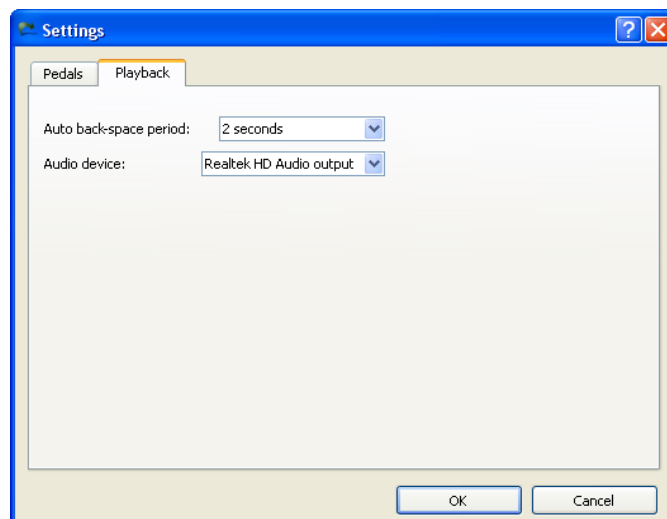
#### 6. Foot controls

If foot controls have been connected, they will show in the 'Pedals' tab. The action of each pedal can be set individually by means of the drop-down selectors. Depressing any pedal will highlight the selected action.



#### 7. Playback

The 'Playback' tab allows the auto back-space period to be set, as well as the audio device to be selected if necessary. The auto back-space period (where the playhead jumps back by a set interval after a pause) can be set in intervals from 1 to 10 seconds.



## **8. Passwords**

If a Yodal user has password protected a recording, a password entry dialogue is shown. The recording is locked until the correct password is entered.

## **9. Closing Yodal Player**

Click on the 'Close' button and Yodal Player will exit.

Yodal is a product of V7 Technology Ltd and is subject to Trademark applications in the United Kingdom and other countries.

V7 Technology Ltd [www.v7technology.com](http://www.v7technology.com)  
Issue 1 January 2010. Subject to change.